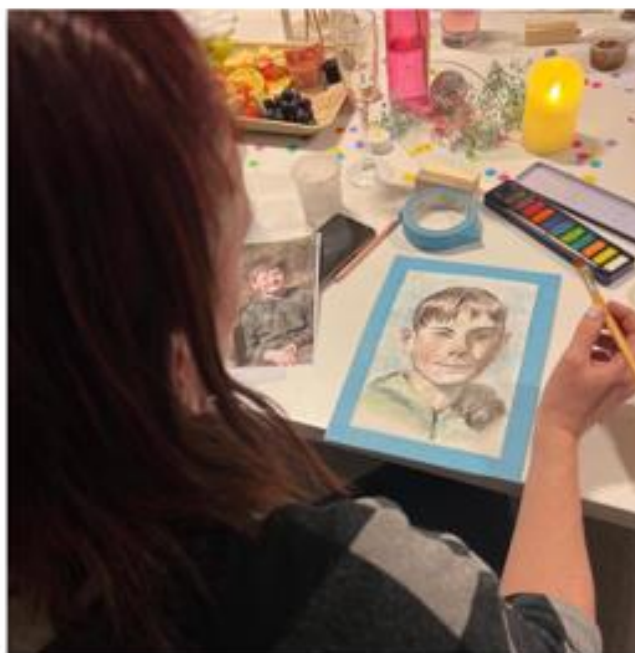


Bury SEND



LOCAL OFFER NEWSLETTER

December 2023



BURY2GETHER Parent Carer Wellbeing Session



What's on in December 2023

SPEAK **E**NQUIRE **K**NOW **D**ISCUSS 

Event	Date	Time	Details
Graduated Approach Toolkit familiarisation session for parents/carers	4/12/23	7.00pm-8.30pm	An online familiarisation session for parent carers on the Graduated Approach Toolkit. Click here to join the meeting
Local Offer Outreach Drop-in	8/12/23	10.00am-11.30am	Parent Carer Engagement Officer will be at the Welly Café, Manchester Road Park to signpost you to any support you need.
BURY2GETHER Care and Convo Session	14/12/23	11.00am-12.00pm	A support group for parent carers of children/Young People with SEND. Come along for a Christmas coffee and catchup. Venue- Bury SEND Hub, Radcliffe
Children and Young People Mental Health Focus Session	15/12/23	10.00am-12.00pm	A focus group discussion to help shape the development of emotional wellbeing services for our children and young people in Bury. Email marina.nixon@nhs.net if you would like to attend. Venue- First Point Family, Fishpool Liberal Club, BL9 9HN.



SEND Communications and Engagement:

Please **subscribe** to the Local Offer mailing list by:

Email: SEND.Localoffer@bury.gov.uk

Follow us on Twitter @BuryLocalOffer

Facebook: [Bury SEND Local Offer](#)

Bury2Gether Parent/Carer Forum:
www.bury2gether.co.uk/membership

Family Information Service:

[Family Information Service \(FIS\) | The Bury Directory](#)



Got concerns and need to speak to someone about your child's EHCP?

SEND Parent/Carer Case Surgery
Online or a Telephone Consultation

Do you have concerns about your child's EHCP or having problems applying for an EHCP for your child? This is an opportunity for you to have a private appointment with Michael Kemp- Strategic Lead for Inclusion and SEND - to talk through your child's plan and discuss any problems you have come across within the SEND system. The one to one appointments will be half hourly, based on a first come first served basis

The next surgery will be held on:
Wednesday 24th January 2024, 1.00pm-3.00pm

FUTURE DATES:

21st February 2024, 1.00pm-3.00pm
13th March 2024, 1.00pm-3.00pm
17th April 2024, 1.00pm-3.00pm
22nd May 2024, 1.00pm-3.00pm
19th June 2024, 1.00pm-3.00pm
17th July 2024, 1.00pm-3.00pm
21st August 2024, 1.00pm-3.00pm
18th September 2024, 1.00pm-3.00pm
24th October 2024, 1.00pm-3.00pm
13th November 2024, 1.00pm-3.00pm
11th December 2024, 1.00pm-3.00pm

To book an appointment, please contact the Parent Carer Communications and Engagement Officer for an appointment at Kasia.Taylor@bury.gov.uk.



I rang you and felt like I was in a black hole however since speaking to you I actually feel like I can see the light. This meeting has been extremely useful in understanding the terminology used and the resources provided have been really beneficial.

Bury SENDiass will be arranging further drop in sessions from January 2024. These will be advertised on the Bury SENDiass Facebook page in the next couple of weeks. SENDiass can be contacted any time via telephone (01706 769634) or email (bury.sendiass@barnardos.org.uk). All queries are responded to within 2 days.

I honestly don't think I would have gotten through the past 2 weeks without the help and support from Katie.

I would just like to take this opportunity of thanking you for everything you have done so far, I wouldn't have had a clue if it wasn't for you and I am super grateful.



Children and Young People's Emotional Wellbeing Services in Bury





Focus Group

We want to hear from parents and carers...

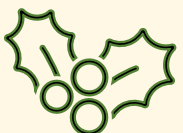
Join us for a focus group discussion to help shape the development of emotional wellbeing services for our children and young people in Bury.

Friday 15th December
10am to 12pm
at First Point Family,
Fishpool Liberal Club, Nelson Street, Bury, BL9 9HN.



To register your place or for more information email :
marina.nixon@nhs.net







Vision and Hearing Impairment/Deaf Education Service

Our Youth Group for young people with Vision & Hearing impairments is excited to practise independent travel to their Winter fun activity next month as ten 11-16 year olds venture down to Cathedral Gardens in Manchester for some ice skating fun!

Many activities for Children and Young People with a disability, offer a free carer. Be sure to contact venues directly to see what's available.

Our pre-school group is also getting ready to celebrate the holidays and our event is in the preparation stages. Look out for photos of both events in next month's newsletter.

We wish all of our families and service users a happy and healthy holiday, and look forward to more celebration of our fabulous young people in 2024!

Lesley Woods
Manager, Vision & Hearing/Deaf Education Service
L.A.Woods@bury.gov.uk

EHCPs Monthly Scorecard — 1st November 2023



Current Number of
Active EHCPs

2657 ↑

This time last year - 2233

Number of EHCPs Issued
this year (2023)

396 ↑

This time last year - 339

Number of Requests for
Assessment this year (2023)

593 ↑

This time last year - 488

Number of EHCPs
Ceased this year (2023)

98 ↓

This time last year - 150

% requests by Parent/Setting/LA this year

Parent, 39.1% Setting, 60.5% LA, 0.2%

% Total requests Agreed/Refused this year

Agreed, 56.6% Refused, 43.4%

Parental Request Breakdown:

Agreed, 34.6% Refused, 65.4%

Setting Request Breakdown:

Agreed, 70.3% Refused, 29.7%

% plans agreed following assessment this year

Agreed, 96.4%

Refused, 3.3%

20 week
compliance % this
year so far
(accumulative)

71%

This time last year
52%
Full year figure for
previous year
50%

This Month's figures
October 23

Number of EHCPs Issued this month

42 (+9 FROM PREVIOUS MONTH) ↑

20 weeks compliance % this month

76% (UP FROM 73% PREVIOUS MONTH) ↑

Number of Requests received this month

58 (+3 FROM PREVIOUS MONTH) ↑

Number of Plans Ceased this month

12 (UP 11 FROM PREVIOUS MONTH)

This scorecard is updated Monthly on the 1st of each month.

Friends of the Local Offer

In November, the Friends of the Local Offer, an informal group of parents, carers, services and schools was launched. The group will be a forum for keeping our local conversations alive in respect of the Local Offer, both the website and the offer itself, following on from the co-production events designed for the Local Offer review.

The agenda for the meeting is intentionally simple; to provide progress updates about review of the Local Offer website on a 'You said, we did' basis, and to offer an opportunity for Bury's stakeholders to share their views on all things SEND. Attendees at the November meetings noted the importance of galvanising the Local Offer into action, in terms of use of the website and the development of the Local Offer itself; it was felt that this group would be instrumental in its support to achieve this outcome.

Updates shared at this month's meetings were as follows:

You said...	We did...
Service information is not always up to date on the current Local Offer.	Services have updated their information pages ready for migration to the revised Local Offer.
The current Local Offer is difficult to navigate and there is confusion between the Local Offer and the Bury Directory.	The Local Offer is due to be relocated on a microsite on the Bury Council webpage so that it is a site in its own right.
Service information is difficult to locate.	Information will be organised into service specific sections, rather than by age group.
There should be a section for families who are new to the SEND arena	A 'new to SEND' section will be introduced on the home page of the Local Offer
The Local Offer should include video of local families sharing their SEND experience.	<p>'Welcome' videos led by Local Area staff will appear on each section of the revised Local Offer. A group of Bury SEND experienced families will be creating video clips to share their experience with those families new to SEND.</p> <p>A group of Bury parents/carers will share their experience of using Personal Budgets for Education, Health and Social Care through video diaries.</p> <p>Bury College Supported Internship students will be creating media information for other young people with SEND in response to children and young people's feedback from the co-production events.</p>

Other SEND issues shared and discussed at the meetings included:

- Arrangements for children and young people with complex needs
- Social Opportunities for adults over 25 with learning disabilities
- Portage and Barnardos agreed to collate a document for the 'New to SEND' section of the revised Local Offer to provide clarification for SEND families about the most common misconceptions with the SEND system
- Access to the Local Offer website in a range of languages
- The role of the SEND Link Governor in challenging school practice for SEND and Inclusion.

Dates for the spring term meetings will be published in the January SEND Newsletter. Any enquiries or comments can be shared via the Local Offer mailbox: send.localoffer@bury.gov.uk

With many thanks to all Bury's families, schools and services supporting the development of our Local Offer across 2023.



Annual Review

Believe in children
Barnardo's

There is a requirement for all Education, Health and Care Plans (EHCP) to be reviewed by the local authority (known as the LA) at least annually. This is usually referred to as the Annual Review. In Early Years EHCPs should be reviewed every 3 to 6 months.

The Annual Review is more than just a review meeting, it is a process that **must** be completed on or before the anniversary of when the EHCP was first issued or the anniversary of the last review. It is laid down in law Children and Families Act 2014 Section 44 and in the SEND Code of Practice 2015.

Children moving from **nursery to primary** or **primary to secondary schools**, there has to be a review. Any amendments **must be amended by 15th February**, of the calendar year your child is due to transfer. Secondary to post 16 settings, the EHCP must be amended by **15th March** of the calendar year.



LA must send the final amended EHC plan within a maximum of 12 weeks of the annual review meeting

THINGS TO CONSIDER

- The child or young persons aspirations
- The child or young person's progress towards achieving the outcomes specified in their EHCP
- Reviewing the child or young persons needs and provisions
- Whether the placement is still appropriate
- SENDIASS can offer to meet with parents, children or young people before the meeting to help prepare them.

BOLTON BULLETS
Powerchair F.C.

⇒ DO YOU USE A POWERED WHEELCHAIR?
⇒ DO YOU WANT TO PLAY A FAST-PACED GAME OF COMPETITIVE FOOTBALL?

For further information, please contact:
secretary@boltonbullets.co.uk

COME AND SEE US
EVERY FRIDAY
FROM 5PM
AT
SMITHILLS SPORTS CENTRE
SMITHILLS DEAN ROAD
BOLTON
BL1 6JS

NHS
Pennine Care
NHS Foundation Trust

Day or night,
we're here to help

Call our 24/7 crisis
mental health helpline
0800 014 9995

#FeelWellThisWinter

SEND YOUTH CLUB

November 2023

WHAT WE'VE BEEN UP TO

This month we have seen our junior session grow to be even bigger and we are thrilled to welcome so many new faces. We've had a big birthday bash, hosted many Mario Kart races, and got in the festive spirit with lots of Christmas crafts and a card competition.



At the start of the month our 16+ football team attended their first match at Leyland Football Association. We had a fantastic time and are so excited to go back for the next tournament in February!



S.STIRLING@BURY.GOV.UK



Oak LP Outreach have delivered four sessions of 'Making Sense of Autism' training to professionals across Bury this half term. This training aims to extend professionals understanding of how autism affects pupils in school and helps to increase their expertise in recognising a pupil's individual strengths and differences.

The training was well received:

"Fantastic delivery and superb knowledge and understanding around the fascinating topic. I will take away lots from this and cascade it to our staff at school."



Oak LP Outreach are also working alongside the speech therapy team and the virtual school to deliver the primary Elklan course. To train professionals in Bury schools to support pupils with speech, language and communication difficulties and remove barriers to learning. Keep a look out for the 11-16 course in the spring term.



Newsletter

Spring Term – 'One For All'



SENCO Support – Coffee and a Catch Up

Focus – SEN Support

Venue - Elms Bank School, Whitefield

Support from OakLP Outreach, Nicola Pemberton and Laura Baker and LA representative, Cath Atherden.

18th January 2024, 3:30-4:30pm, Elms Bank School

SENCO Solution Meeting

9:00-13:00

Thursday 29th February 2024

Venue – Elms Bank College Hub, Prestwich

Agenda
Transition

Preparing students with SEND for transition to year 7,
Transition from children's to adult services* social care.
Supporting students with social workers for transition

Plus opportunity to talk with primary and secondary SENCOs to discuss cases

Support Surgery

Venue - Elms Bank School

Support from
OakLP Outreach, Elms Bank School, Virtual School, Educational Psychology Service and LA Outreach

Venue - Elms Bank School 9:15-12:15

1st February and 14th March 2024
8th February and 21st March 2024



TA Developmental Drop In

Venue - Elms Bank School/College/Unsworth Primary RP* *Please specify when you book*

8:30am – 12:15pm

2nd February
9th February

Inclusion is at the heart of our trust



BROOKHAVEN SCHOOL – Version 2

Newsletter



unique by design, awesome by outcome

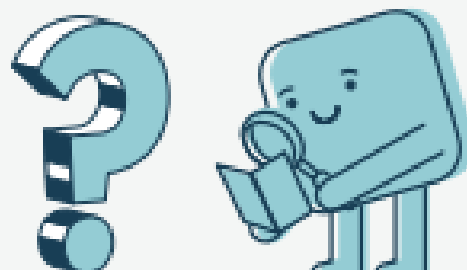


Welcome back to Brookhaven Schools Monthly Newsletter! For this addition we want to talk about how quick time is flying by! It feels like yesterday the first brick was laid! We have come a long way and we are very excited to get in there to inspire, grow and educate new students!

The journey of Brookhaven School started with a vision and a plot of land. Today, it stands! Every beam that has been laid so far has been laid with a vision for the future. We believe that Brookhaven School is not just a building; it will be a cornerstone of the Bury community. It's a place where parents, teachers, and students will come together to create brighter futures . We can't wait to see what the future holds!

Do You have a burning question?

Looking for Answers to Burning Questions? We've Got You Covered! As a school that values open communication, we're thrilled to introduce our brand-new FAQ page! Our FAQ page is your one-stop destination for clear, concise answers to all your burning questions. We've compiled a comprehensive list of queries that we have been frequently asked, so you can find the information you need quickly and easily!



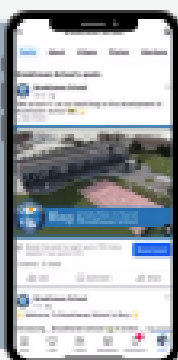
Our goal is to make your experience with our school as seamless as possible. So, if you have a question, chances are, you'll find the answer right here! Have a question not covered? Don't hesitate to reach out – we're always here to assist you. ✨



Take a look at our new FAQs page:
www.brookhavenschool.org.uk/faqs



Follow us on Facebook!

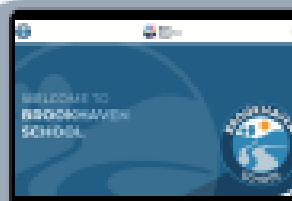


Follow the Brookhaven Facebook page for behind-the-scenes glimpses, sneak peeks, and all the latest news about Brookhaven School!



[@Brookhaven.School.Bury](https://www.facebook.com/Brookhaven.School.Bury)

Check Out Our Website!



Looking for an answer to a question about Brookhaven School?

www.brookhavenschool.org.uk





The first of BURY2GETHER's parent/carer well-being sessions was a huge success. Thanks to our dedicated volunteers for facilitating this.

We are also very grateful for the support of the Asda Foundation, whose 'Empowering Local Communities' grant has subsidised these events and GG Bakes who are providing refreshments.

To book on a future session, click here:

<https://forms.gle/VtZJi2wKj7hBZtzK8...>

We can't wait for the next one!



CARE & CONVO

Supporting Parents/Carers who have a Child/Young Person with a Special Educational Need and/or a Disability (SEND), aged 0-25, who access Bury services.

Are you a Parent/Carer?

Fancy a brew and an offload to other parent/carers? We are here to listen. (Children/Young People welcome).

Next date: Thurs 14th December 11.00am - 12.00pm

During this session, our parent/carer wellbeing library will be open! This is the opportunity for our members to borrow wellbeing resources and equipment to use at home.



Our printing station will be set up. The sensory room will be open and parent/carers can help themselves to 'invisible disability' lanyards.



Please let us know you are coming by booking your place at the email address below:
BURY2GETHER@gmail.com
www.bury2gether.co.uk

The Bury SEND Hub (Home of BURY2GETHER)
Westminster Avenue
Radcliffe
Greater Manchester
M26 3WD

@BURY2GETHER



Parent/Carer Wellbeing Workshops

BURY2GETHER are pleased to introduce a new series of wellbeing events for our Parent/Carer members. We have two different wellbeing sessions on offer across 4 dates. We are very grateful for the support of ASDA Foundation, whose 'Empowering Local Communities' grant has subsidised these events.

Create & Escape	Self Care Saturdays
<p>Join us for a relaxing evening art session, where you will be guided to create a beautiful piece of art work. Meet other parent/carers within the community, get creative whilst enjoying some lovely nibbles and drinks</p> <p>Subsidised Tickets Cost £3</p> <p>Friday 17th November 6:00pm - 8:00pm</p> <p>Friday 12th January 6:00pm - 8:00pm</p>	<p>Join us for a relaxing but informative session on self care. This session is an informal interactive workshop where you will be guided through activities to support and improve your overall wellbeing alongside some lovely nibbles and drinks.</p> <p>Saturday 2nd December 11:00am - 1:00pm</p> <p>Saturday 27th January 11:00am - 1:00pm</p>

BOOK NOW

Email bury2gether@gmail.com

Attendees will also have access to our Wellbeing Library

To be eligible for a place, you must be a member of BURY2GETHER. Membership forms can be completed at bury2gether.co.uk/membership

The sessions will be held at: Bury SEND Hub (Home of BURY2GETHER), Westminster Avenue, Radcliffe, M26 3WD

Sunday 10th December

4pm - 6pm



SEND SANTA SPECIAL
@
SECRET GARDEN-HOYLES PARK

£15 per Child

- 🌲 Santa Visit 🌲 Gift 🌲 Craft 🌲 Campfire 🌲
- 🌲 Marshmallow Toasting 🌲 Refreshments 🌲
- 🌲 Forest School & Sensory Garden experience 🌲



WINTER WONDERLAND AT SECRET GARDEN - HOYLES PARK

Enjoy our Forest School & Sensory Garden Winter Wonderland experience!

SUNDAY 10TH DECEMBER
6.30-8.00PM

The Santaceptor

Tickets - £10 per child
TICKET INCLUDES: EXCLUSIVE SITE USAGE, CRAFT, THE SANTACEPTOR VISIT & A GIFT, FIRE STARTING, CAMPFIRE & MARSHMALLOW TOASTING!

ADDITIONAL ITEMS AVAILABLE FROM OUR LITTLE SECRET GARDEN CHRISTMAS MARKET
REFRESHMENTS, CHRISTMAS DRINKS, SWEETS, POPCORN, COOKIES & CAKES!



BEE INCLUSIVE'S WINTER HOLIDAY ACTIVITIES

Boomerang - Lunch with Santa
Multi-sensory playcentre session for children with SEND including complex care, PMLD and wheelchair users. Buffet lunch, hot chocolate and meet Santa!
Sunday 3rd December 1.00pm-2.30pm

KidsRock
Music and Movement session for children with SEND including complex care needs, PMLD and wheelchair users. Reception class upwards
Thursday 28th December 1.00pm-2.00pm

Jump Xtreme & That Fun Place
Trampoline park and play centre for children primary and secondary school aged who have SEND.
Thursday 28th December 5.00pm-7.00pm

Imagination Bay Adventure Play
This activity is for Early Years children. Soft Play, Imagination play and an indoor sand area.
Tuesday 2nd January 11:15am - 1:15pm

Bury Arcade Club
Two hours exclusive use of retro and modern arcade games for children primary and secondary school age who have SEND
Tuesday 2nd January 2.00pm - 4.00pm

Subsidised tickets for SEND and all activities are Bee Inclusive exclusive events.

FOR FULL DETAILS, ELIGIBILITY AND TO BOOK VISIT
[HTTPS://BOOKWHEN.COM/BEEINCLUSIVE?TAGS=SCHOOLHOLIDAYS](https://bookwhen.com/BEEINCLUSIVE?TAGS=SCHOOLHOLIDAYS)



SECRET GARDEN HOYLES PARK
AGES 6+

Winter Holiday Club

28TH DEC & 5TH JAN 10:00-2:00PM £24
SEND ONLY DATES: 29TH DEC & 4TH JAN 10-12PM & 12-2PM £12 PER 2 HOUR SLOT

HAF FUNDED SPACES AVAILABLE

BURY HOLIDAY Activities & Food Programme

Secret Garden
HOYLES PARK

HOT FOOD INCLUDED
CONTACT TO BOOK



BURY SEND HUB
Westminster Ave,
Radcliffe,
M26 3WD




WHAT'S ON AT BURY SEND HUB

MON 4 DEC
9:15 AM - 11:15 AM
FREE MOVING, HANDLING AND BACKCARE SESSION FOR PARENT/CARERS PROVIDED BY NUANCE. TO BOOK EMAIL BURY2GETHER@GMAIL.COM

WED 6 DEC
11:00 AM - 1:00 PM
SEND EARLY YEARS (0-5 YEARS) STAY & PLAY/CARE & CONVO WITH SEND HEALTH VISITOR AND SENIOR PORTAGE WORKER. BOOKING ESSENTIAL AT BOOKWHEN.COM/BEEINCLUSIVE

WED 6 DEC
4:30 PM - 5:30 PM
HAPPY SIGNS CHOIR: A SINGING AND SIGNING CHOIR FOR PEOPLE WITH SEND AND THEIR FAMILIES. FOR MORE INFORMATION/TO BOOK PLEASE CONTACT EMMA: HAPPYSIGNSCIC@YAHOO.COM

SAT 9 DEC
10:00 AM - 5:00 PM
HAIRCUTS AT THE SEND HUB. BOOK A SLOT AT: WWW.BOOKWHEN.COM/BEEINCLUSIVE

WED 13 DEC
10:00 AM - 12:00 PM
SENDIASS WORKSHOP FOR PARENT/CARERS: TRANSPORT BOOKING ESSENTIAL AT: [HTTPS://WWW.EVENTBRITE.CO.UK/E/BURY-SENDIASS-SEN-SUPPORT-WORKSHOP-TICKETS-685490910767?AFF=EBDS5BDESTSEARCH](https://www.eventbrite.co.uk/e/bury-sendiass-sen-support-workshop-tickets-685490910767?aff=EBDS5BDESTSEARCH)

THU 14 DEC
11:00 AM - 12:00 PM
BURY2GETHER CARE AND CONVO. OPEN TO ALL PARENT/CARERS. CHILDREN ARE WELCOME TO ATTEND. BOOKING ESSENTIAL: BURY2GETHER@GMAIL.COM

SAT 16 DEC
11:00 AM - 12:00 PM
KIDSRock MUSIC 4 GENERATIONS SEND MUSIC SESSION. JOIN CHRIS AND AH YEE FOR A FUN, INTERACTIVE MUSIC SESSION. FOR MORE INFORMATION AND TO BOOK: EMAIL - KIDSRockWITHCHRIS@HOTMAIL.CO.UK TELEPHONE - 07855 733308

WED 20 DEC
11:00 AM - 1:00 PM
SEND EARLY YEARS (0-5 YEARS) STAY & PLAY/CARE & CONVO WITH SEND HEALTH VISITOR AND SENIOR PORTAGE WORKER. BOOKING ESSENTIAL AT BOOKWHEN.COM/BEEINCLUSIVE

WED 20 DEC
4:30 PM - 5:30 PM
HAPPY SIGNS CHOIR: A SINGING AND SIGNING CHOIR FOR PEOPLE WITH SEND AND THEIR FAMILIES. FOR MORE INFORMATION/TO BOOK PLEASE CONTACT EMMA: HAPPYSIGNSCIC@YAHOO.COM

THU 28 DEC
1:00 PM - 2:00 PM
KIDSRock SEND FUN, INTERACTIVE MUSIC SESSION. FOR MORE INFORMATION AND TO BOOK, VISIT BOOKWHEN.COM/BEEINCLUSIVE

BEE INCLUSIVE PARTIES
EXCLUSIVE USE OF OUR VENUE FOR TWO HOURS FOR 15-20 CHILDREN INCLUDING ACCESS TO THE COURTYARD, PLAYGROUND AND SENSORY ROOM. FULL ACCESS TO OUR KITCHEN. PARTY INVITES AND ACCESSORIES AVAILABLE TOO.
VISIT WWW.BEEINCLUSIVE.CO.UK FOR FURTHER DETAILS.
OR TO BOOK A PARTY, EMAIL US AT BOOKBEEINCLUSIVE@GMAIL.COM.

BEE INCLUSIVE SENSORY ROOM
AVAILABLE FOR HIRE TO BURY SEND FAMILIES AND ORGANISATIONS. TO BOOK A SESSION, VISIT WWW.BOOKWHEN.COM/BEEINCLUSIVE OR VISIT WWW.BEEINCLUSIVE.CO.UK/SENSORY-ROOM FOR FURTHER DETAILS.

BURY2GETHER WELLBEING LIBRARY
A RANGE OF BOOKS AND WELLBEING EQUIPMENT FOR HIRE. BOOK BY APPOINTMENT BY EMAIL TO BURY2GETHER@GMAIL.COM



SEND Early Years (age 0-5) Sessions

2 hour Stay & Play



UPCOMING SESSIONS:

Wednesday 6th December 2023
Wednesday 20th December 2023
Time: 11.00am - 1.00pm



Bee Inclusive is hosting the above Early Years sessions for children with Special Educational Needs and Disabilities (SEND) aged 0-5 years and their parent/carers. The sessions will be filled with lots of fun and educational activities.

These sessions are facilitated by Kelly Judd (Senior Portage Worker) and Laura Trevor (SEND Health Visitor) with support from other professionals and volunteers who will be available for advice and support. Refreshments will be available, and the Sensory Room and sensory courtyard will be open for use. A parent/carer must stay and supervise their child at all times.

To be considered for a place, you must meet the following criteria:

- Is your child 0-5 years old?
- Does your child live in (or access) services in Bury?
- Do any of the following apply? 1) Does your child have a diagnosis of SEND? 2) Do you or professionals suspect that your child has SEND? 3) Is your child on the pathway for a SEND diagnosis?

Please note: In order to allocate places on these sessions, professionals will prioritise children who are not in an early years setting, who are not currently accessing early years services, children who cannot access generic early help sessions, and those who haven't attended our sessions before.

Visit www.bookwhen.co.uk/beeinclusive to request a place at these sessions. You will be contacted by Bee Inclusive if your family have been allocated a place.


WWW.BURY2GETHER.COM WWW.BEEINCLUSIVE.CO.UK



Westminster Avenue
Radcliffe M26 3WD

[@bee_inclusive](https://www.instagram.com/bee_inclusive)
[@beeinclusiveuk](https://www.facebook.com/beeinclusiveuk)

Bee Inclusive CIC is a 'not-for-profit' Community Interest Company - 12844262. We provide social opportunities for children and young people with SEND, (Special Educational Needs and Disabilities).



CARTMAN & ROSS SOLICITORS **AtUr Services** **CAHN**
Caribbean & African Health Network

Legal Drop-in Sessions

Join us online for our legal drop-in session, occurring every other month (4th Thursday of the month).

Time: 6pm to 7pm / Where: Zoom session

We will be supporting the community by providing brief information and a short Q&A on a variety of legal issues including completion of legal aid forms and options for required support.

Call our confidential helpline on 07710 022 382

For more information on how to join the session, email us on advocacy@cahn.org.uk

To hear more about what we do, please access our website on <https://www.cahn.org.uk> #weCAHNhelp

Follow us on [@cahnuk](https://www.youtube.com/channel/UCahnuK) [@cahnuk](https://www.facebook.com/cahnuk) [@cahn_uk](https://www.instagram.com/cahn_uk) [@cahn_uk](https://www.twitter.com/cahn_uk) [@cahn_uk](https://www.linkedin.com/company/cahn-uk) [@cahn_uk](https://www.tiktok.com/@cahn_uk)



CAHN Caribbean & African Health Network **Home Office**

CAHN and Home Office Drop-in Sessions

Join us online for our immigration drop-in session, occurring every other month.

Time: 1pm to 4pm
Where: Zoom session

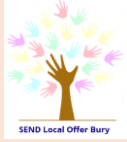
We will be supporting the community with a variety of issues relating to Immigration and the Civil Service.

Call our confidential helpline on 07710 022 382
For more information on how to join the session, email us on advocacy@cahn.org.uk

The Home Office assures there will be no enforcement activity during the drop-in

To hear more about what we do, please access our website on <https://www.cahn.org.uk> #weCAHNhelp

Follow us on [@cahnuk](https://www.youtube.com/channel/UCahnuK) [@cahnuk](https://www.facebook.com/cahnuk) [@cahn_uk](https://www.instagram.com/cahn_uk) [@cahn_uk](https://www.twitter.com/cahn_uk) [@cahn_uk](https://www.linkedin.com/company/cahn-uk) [@cahn_uk](https://www.tiktok.com/@cahn_uk)



SEND Local Offer Key Contacts

Portage	0161 253 7609	K.A.Judd@bury.gov.uk	Bury Portage Home Teaching Team National Portage Association
Family Information Service	0161 253 5941	childinfo@bury.gov.uk	Family Information Service (FIS) The Bury Directory
Early Years	0161 253 6066	J.Ash@bury.gov.uk	Early Years Special Educational Needs & Disability (SEND) Information The Bury Directory
EHCP Team	0161 253 5969	EHC@bury.gov.uk	Education, Health, Care Assessments and Plans - Bury Council
Early Help	0161 253 5200	EarlyHelp@bury.gov.uk	Early Help - Bury Council
Children with Disabilities Team	0161 253 6070	CWD@bury.gov.uk	Children with disabilities - Bury Council
SEND Support Team	07976 682398	c.atherden@bury.gov.uk	SEND Support Service The Bury Directory
Education Psychologists	0161 253 6406	edpsych@bury.gov.uk	Educational Psychology Service The Bury Directory
VI/HI impairment Team	0161 253 7159	L.A.Woods@bury.gov.uk	Vision and Hearing Impairment/Deaf Education Service - Hearing Impairment The Bury Directory
Transport	0161 253 6968	SchoolAndCollegeTransport@bury.gov.uk	School and college travel assistance - Bury Council
School Admissions Team	0161 253 6474	admissions@bury.gov.uk	www.bury.gov.uk/schools-and-learning/school-admissions
Connexions	0161 253 7733	Connexions@bury.gov.uk	www.bury.gov.uk/Connexions
SEND Youth Service	0161 253 6122	S.Stirling@bury.gov.uk	-
Bury Employment Support and Training	0161 761 4662	thewellycafe@gmail.com	www.bury.gov.uk/jobs-and-skills/bury-employment-support-and-training
Persona/Escape	0161 253 5100	info@personasupport.org	www.personasupport.org/our-services/escape/
SENDiass	01706 769 634	bury.sendiass@barnardos.org.uk	www.barnardosendiass.org.uk/bury-sendiass
School Nursing Team	Schools in Radcliffe: 0161 724 2086		www.northernalliance.nhs.uk/our-services/school-nursing-1
	Schools in Whitefield or Unsworth: 0161 798 2160		
	Schools in Ramsbottom, Tottington or North Manor: 01706 283 506		
	Schools in Prestwich: 0161 798 2160		
	Schools in Bury central: 0161 762 3291 (option 5)		

School Immunisation Team	0161 724 2132		<u>School Immunisation Team- Bury Community</u>
Paediatric Physiotherapy Team	0161 2060657	burypaedphysio@nca.nhs.uk	<u>Paediatric Physiotherapy - Bury Community</u>
Occupational Therapy Team	0161 206 0668/0161 206 0667		
Health Visitor	Radcliffe Health Visiting Team - 0161 724 2086 Opt 1		-
	Ramsbottom, Tottington and North Manor Health Visiting Team - 01706 282 933.		-
	Bury Town Centre Health Visiting Team - 0161 762 3291 (select option 3)		-
	Prestwich Health Visiting Team - 0161 798 2721		-
	Whitefield Health Visiting Team - 0161 762 3748		-
	Chatsworth House, Little 66, Roach Bank Rd, Bury BL9 8RN		-
CAMHS	0161 716 1100 / 1112		<u>www.penninecare.nhs.uk/burycamhs</u>
Speech and Language Team	0161 724 2092/01617161505		<u>Paediatric Speech and Language Therapy :: Northern Care Alliance</u>
Community Paediatrics	01706 906 726 (Booking and Scheduling)		<u>Community Paediatrics and Child Health :: Northern Care Alliance</u>
SEND Designated Clinical Officer	07929 865159	joanne.mcmaster2@nhs.net	
Orthoptist - Community Eye Team	0161 762 1692	SPOA.fax@nca.nhs.uk	<u>Eye Service :: Northern Care Alliance</u>
Audiology	01706 674 913/Children's hearing aid service 0161 778 3033	NESaudiology@nca.nhs.uk	<u>Audiology :: Northern Care Alliance</u>
Virtual Schools		J.Foster@bury.gov.uk	<u>www.bury.gov.uk/schools-and-learning/virtual-school</u>
Young People's Mental Health Support Team		pcn-tr.burymhst@nhs.net	<u>www.penninecare.nhs.uk/burymhst</u>
Children's Learning Disability Team, Bury	0161 762 3263	pcn-tr.burychildrenldteamreferrals@nhs.net	<u>www.penninecare.nhs.uk/burychildrenld</u>